

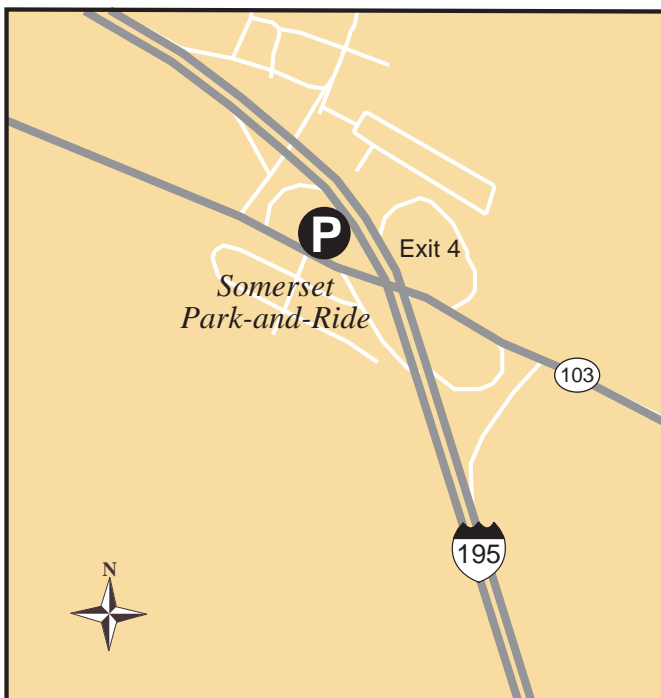
# Somerset Park-and-Ride Lot

Route 103 at I-195, exit 4

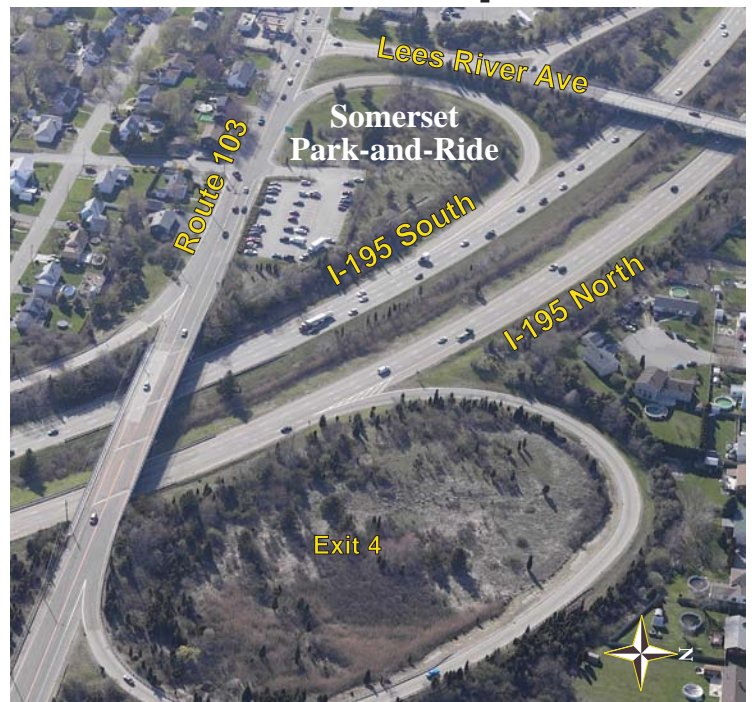
**Spaces:** 68  
**Average Occupancy:** 94%  
**Contact:** (888)-4-COMMUTE  
**Commuting Options:** Carpool, Vanpool

**Lighted:** Yes  
**Bus Shelter:** No  
**Bike Rack:** No  
**Public Telephone:** Yes

## Location Map



## Site Map



(c) Copyright 2003, Pictometry International

## Driving directions:

*From the West (Seekonk, Swansea)*

- Take I-195 East to **Exit 4** for Lee's River Ave to Route 103.
- Bear **RIGHT** at the top of the ramp.
- Merge onto **Lee's River Avenue**.
- Turn **LEFT** at the first traffic signal onto **Route 103 East**.
- Take the next **LEFT** into the entrance for the park-and-ride lot, located across from Home Street.

*From the East (New Bedford, Fall River)*

- Take I-195 West to **Exit 4A** for Route 103 West.
- Merge onto **Route 103 West**.
- Take the first **RIGHT** into the entrance for the park-and-ride lot, located across from Home Street.