



Addressing Transportation Equity in the System Preservation Goal Area

June 25, 2020

Betsy Harvey

Outline

- **Proposed system preservation and modernization criteria to evaluate for impacts on equity populations**
- **Summary of feedback and key MPO decision points**

Proposed Equity Evaluation Framework

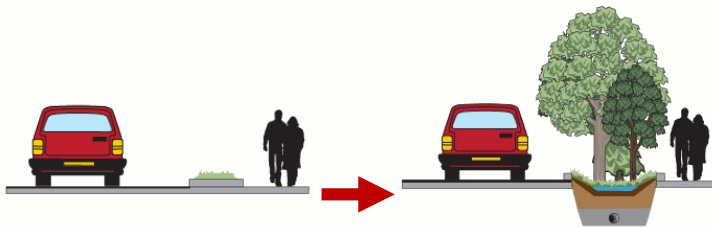
Goal: Evaluate project's impacts on equity populations

Evaluate Equity Criteria

System Preservation Criteria



Evaluate equity criteria in each goal area



Improves ability to respond to extreme conditions



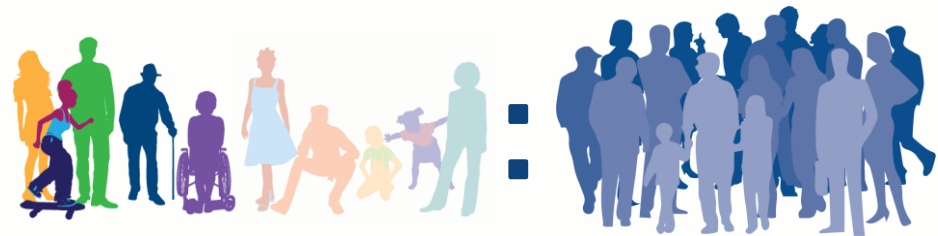
Base Score

X

Identify Equity Populations in Project Area



Determine the share of the equity population and compare to the regional average



Equity Multiplier

= Final Score

Proposed Criteria

HOSPITAL ENTRANCE

- Improves transit asset(s)
- Improves ability to respond to extreme conditions
- Improves emergency response
- Improves substandard sidewalk(s)
- Demonstrates regional coordination
- Improves substandard pavement
- Improves substandard roadway bridge(s)
- Improves substandard traffic signal equipment

Maintaining the existing transit system...is critical to economic development, social justice, and climate resiliency.



Summary of Input

- **Different populations benefit differently from various types of transportation improvements**
 - **What does the intersection of demographic indicators tell us about transportation needs and vulnerability?**
- **Transportation investments have disproportionately affected some residents more than others, in particular people of color and people with low-incomes**

Populations with Multiple Indicators of Potential Transportation Disadvantage

Income Status	Total Population	Minority Population	Nonminority Population
Low-income	682,162	53%	47%
Non-low-income	2,449,429	25%	75%
Poverty Status Not Determined	118,878	36%	64%

Populations with Multiple Indicators of Potential Transportation Disadvantage

Access to Personal Vehicle	Total Population	Minority Population	Nonminority Population
Zero Vehicles	351,338	52%	48%
One or More Vehicles	2,769,623	29%	71%
N/A (Residents in Group Quarters)	129,507	36%	64%

Populations with Multiple Indicators of Potential Transportation Disadvantage

Access to Personal Vehicle	Total Population	Low-income	Non-low-income	Poverty Status Not Determined
Zero Vehicles	351,338	58%	42%	0%
One or More Vehicles	2,769,623	17%	83%	0%
N/A (Residents in Group Quarters)	129,507	10%	1%	89%

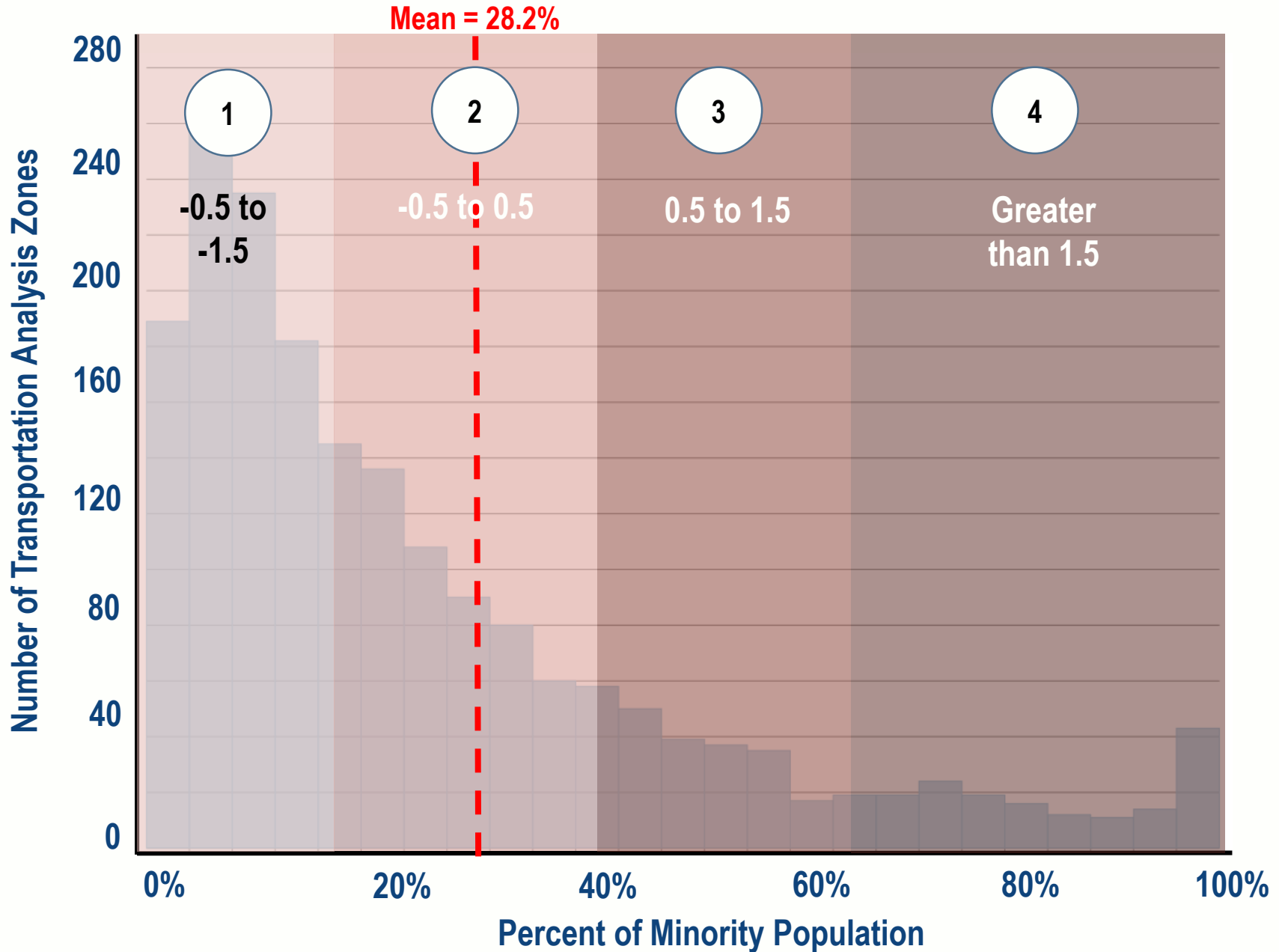
Key MPO Decision Points

- How should equity populations be weighed relative to each other?
 - Set using the equity index
- How should the equity goal area be weighed relative to the other goal areas?
 - Set using the equity multiplier

Questions?

Feedback?

Step 1: Create Equity Index



Step 1: Create Equity Index

Demographic Group	Base Index Points	Population Weight	Maximum Index Points
Minority population	1 through 4	x2	8
Low-income population		x1	4
People with limited English proficiency		x1	4
People with disabilities		x0.5	2
Elderly population		x0.5	2
Youth population		x0.5	2
HIGHEST POSSIBLE INDEX			22

Step 2: Score Project

Identify Project's Equity Multiplier

Project's Equity Index	Project's Equity Multiplier
1 to 5	1.25
6 to 10	1.50
11 to 15	1.75
16 or greater	2.00